



---

As I was reading through a book on world mythology, I came across a mention that some ancient cultures believed that the center of the world was a vertical axis, as opposed to a central point. A page later I came across mentions of the World Tree that grows at the center of the earth and supports the heavens with it's gifts of earth below, and the stars above. I quickly realised that our "modern" Christmas tree is exactly that- A tree with gifts below it and a star on top. This pendant is the exploration of combining these two different viewpoints: The Center of the World as an axis and the World Tree concept to create a spinning world in an iconic Christmas tree shape.

Copper cone with hand-sawn brass continents shaped into cone with silver cylindrical axis. The world free-spins on it's vertical axis. The hanger has been created from an reclaimed antique brass keyhole plate. The world is removeable from hanger for display.

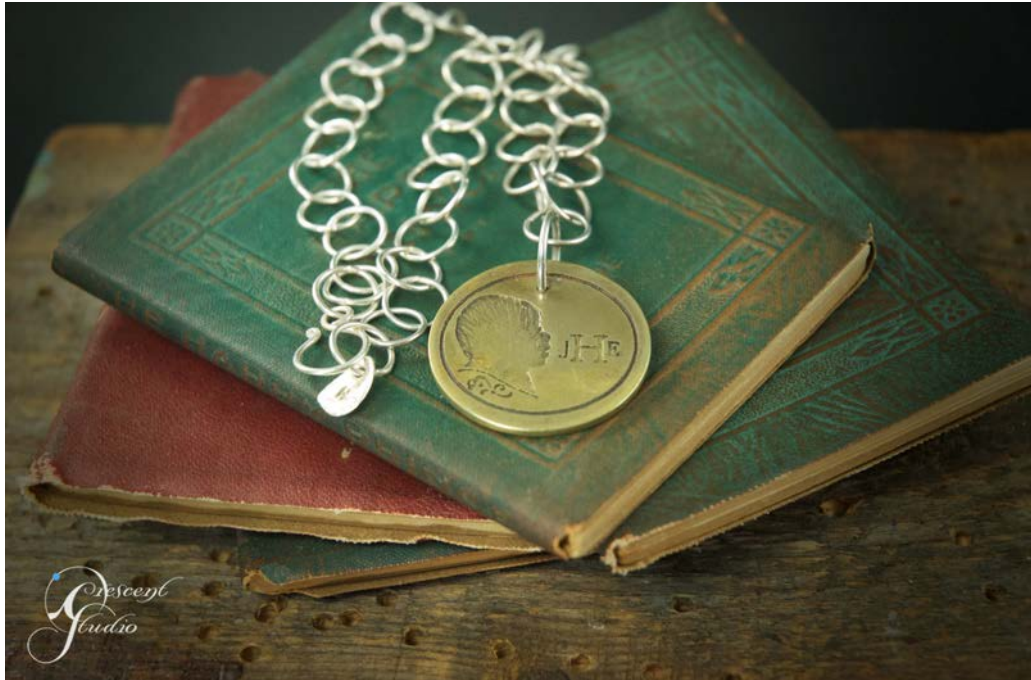
Cuff: copper, silver and brass



This kinetic Flower Cuff was made from a recycled copper etching plate, etched with hand-drawn flowers, and features a sliding etched silver flower centerpiece with a spinning central flower which is held in place with knotted brass wire. All floral elements were hand-drawn. Flowers on silver were drawn on paper, scanned, adjusted in Photo-shop and printed onto special PNP paper which is ironed onto the silver prior to etching.



Pendant: brass with silver chain



Brass portrait pendant: images were first designed in Photoshop, printed onto PNP paper, then ironed onto brass and etched. Both halves were soldered together to form a dual-sided pendant. Hand-made sterling clasp and ID tag.



---

Two penguins and a ladybug made from copper and silver, with black patina. Each pattern custom-designed for intended recipient.



---

These bracelets are made from discarded cello strings. These strings have been played by Hannah Alkire on a Chris Dungey cello all around the globe- from cathedrals in Europe to wine bars in Colorado.  
Sterling silver tubing used to crimp ends and connect loops.



Necklace made with 70 pearls for a 70th birthday. Freshwater pearls, Swarovski crystals and Czechoslovakian glass, hand-knotted on silk cording.



---

White freshwater pearl and Swarovski crystal necklace with accompanying bracelet.

Grey and white freshwater pearl and Swarovski crystal necklace.

## Silver lace ring

---



---

Sterling silver ring etched with lace pattern.

I started with original piece of handmade lace, made by the ring's recipient. The lace sample was scanned, printed onto PNP paper, then ironed onto silver and etched. This thin etched silver was then soldered onto another layer of silver and formed into a ring.





## Multi-prong ring

---



---

This ring was originally designed as one single sheet of silver, with its pattern including all the necessary prongs. Prongs fold up from ring shaft to hold stone. Set with an oval dendritic quartz.

Cast silver and copper ring

---



---

This spiral wave element was cast in cuttlefish bone with scrap sterling silver.  
U-shaped band is sterling silver and etched copper. The design on the copper is hand-drawn.

Sterling silver wrap ring

---



---

This ring is made from a single strip of sterling silver, hammered for texture, then wrapped and soldered into place.

Silver and moonstone/pearl earring & necklace set



This necklace and earring set was inspired by a group of leaves my 6-year-old daughter found in an Ikea parking lot. She discovered them and said, "Mommy you should make earrings out of these!"

The sterling silver leaves are soldered to long spiraled wires, to imitate dangling leaves. The earrings are accented with moonstone, the necklace is accented with pearls.





---

Enamel work on copper: hand-cut copper acorns and flowers for use in future jewelry projects.

Beaded silver wire earrings



A variety of sterling silver wire beaded earrings. Semi-precious stone, pearl and Czechoslovakian glass beads.