

9" x 9" Pear Paintings, Series 01
Painted simultaneously on one sheet of Fabriano watercolor paper
2007



First set of a series of pear paintings.
Underlying concept: to create a family of paintings, all with a consistent color grouping and subject matter on one single sheet of Fabriano watercolor paper. Each individual section was trimmed from the larger sheet to create 6 distinct, yet related paintings.

First set of paintings: 6 "full size" paintings at 9" x 9" square, framed to 13" x 13", and 3 "edge paintings" 9" wide by approximately 2.5" tall, which are as yet unframed.

Details from some paintings were selected for use in a 2008 desktop calendar.

All original paintings for sale* at www.crescentstudio.etsy.com

**at this date some paintings are no longer available.*

8"x8" Pear Paintings, Series 02
Painted simultaneously on one sheet of Fabriano watercolor paper
2007



Second set of a series of pear paintings.
Underlying concept: to create a family of paintings,
all with a consistent color grouping and subject
matter on one single sheet of Fabriano watercolor
paper. Each individual section was trimmed from the
larger sheet to create 6 distinct, yet related paintings.

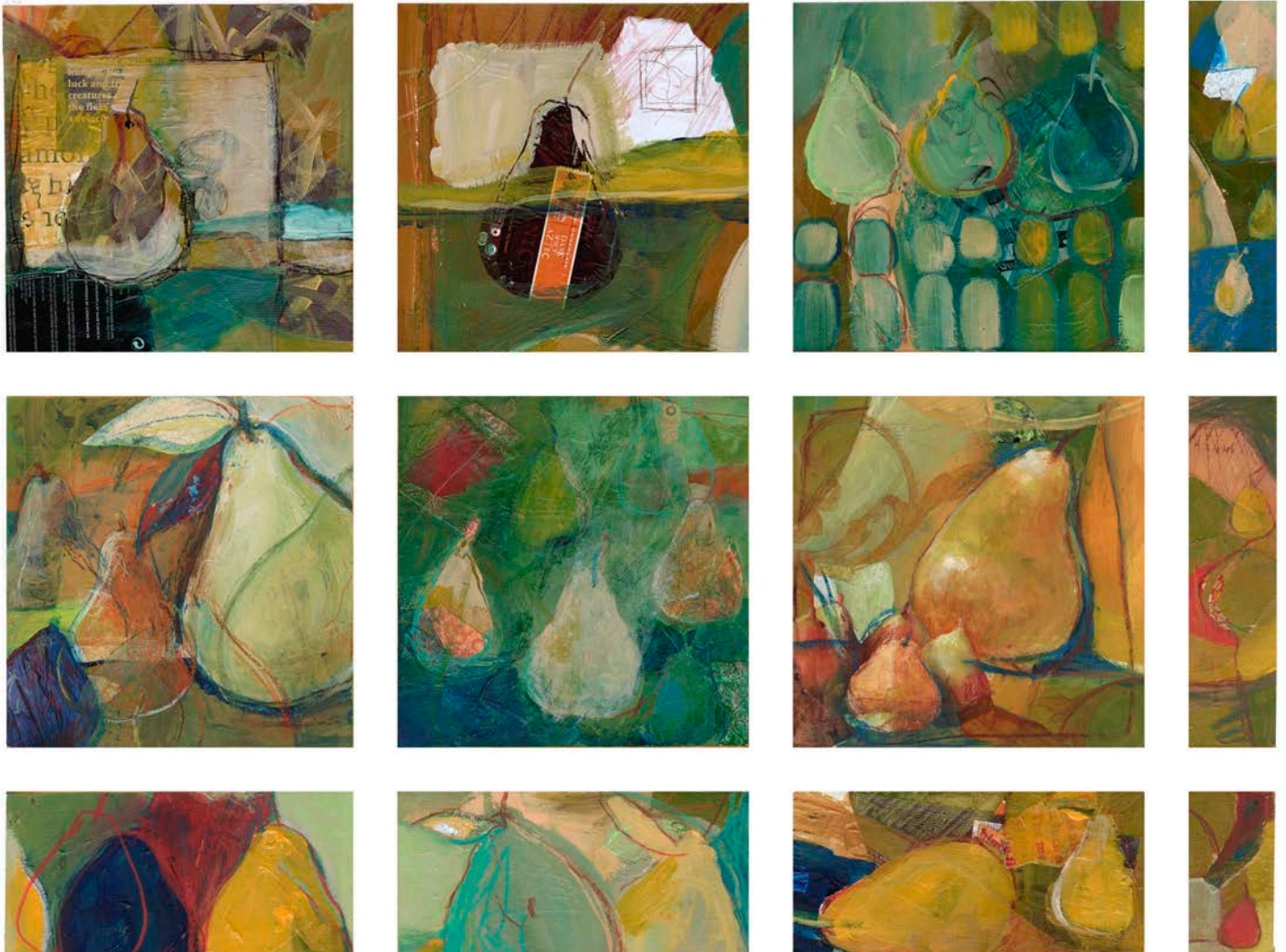
First set of paintings: 6 "full size" paintings at 8" x 8"
square, framed to 12" x 12", and 6 "edge paintings"
at various sizes, which are as yet unframed.

Details from some paintings were selected for use in
a 2008 desktop calendar.

All original paintings for sale* at
www.crescentstudio.etsy.com

**at this date some paintings are no longer available.*

8"x8" Pear Paintings, Series O3
Painted simultaneously on one sheet of Fabriano watercolor paper
2007, with alterations 2012



Third set of a series of pear paintings.
Underlying concept: to create a family of paintings,
all with a consistent color grouping and subject
matter on one single sheet of Fabriano watercolor
paper. Each individual section was trimmed from the
larger sheet to create 6 distinct, yet related paintings.

First set of paintings: 6 "full size" paintings at 8" x 8"
square, framed to 12" x 12", and 6 "edge paintings"
at various sizes, which are as yet unframed.

Details from some paintings were selected for use in
a 2008 desktop calendar.

All original paintings for sale* at
www.crescentstudio.etsy.com

**at this date some paintings are no longer available.*



Pair of Original Paintings, originally painted as one painting.
Painted on commission.



Commissioned painting: Client requested a painting as a gift for friends. The recipients have a show horse, a beloved dog and a fondness for the number "13." I incorporated 13 dogs, 13 horses and 13 number 13's into the final painting. Originally painted as one sheet of Fabriano watercolor paper, the painting developed into two distinct halves. One more formal, the other more expressive. The formal half went to the originally intended recipients, the remaining half was purchased by the client.

Painting is acrylic, with collaged elements of paper, cardstock, and actual house numbers.